

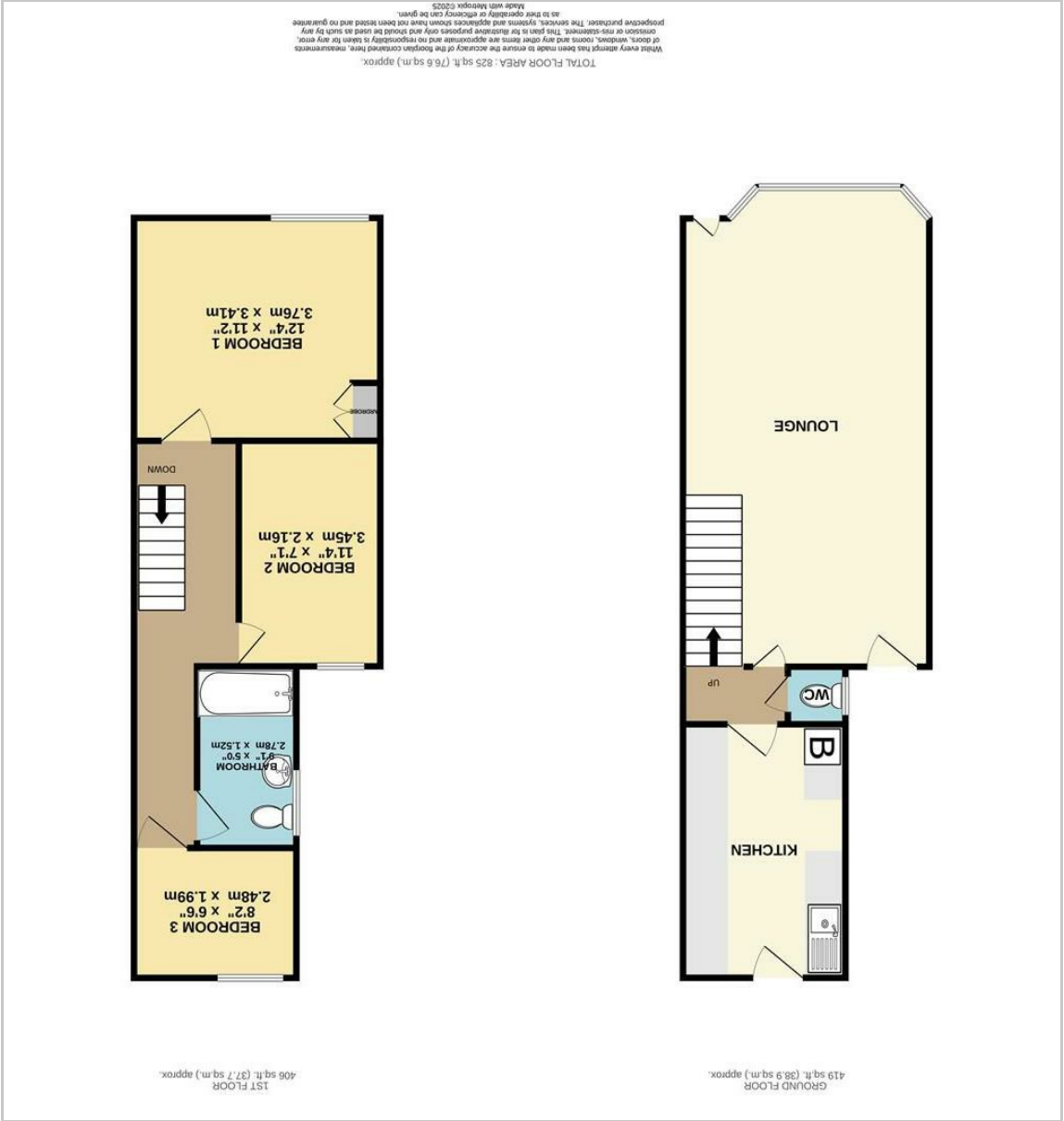


59 Unity Street
Sheerness, ME12 2PR
Asking price £160,000

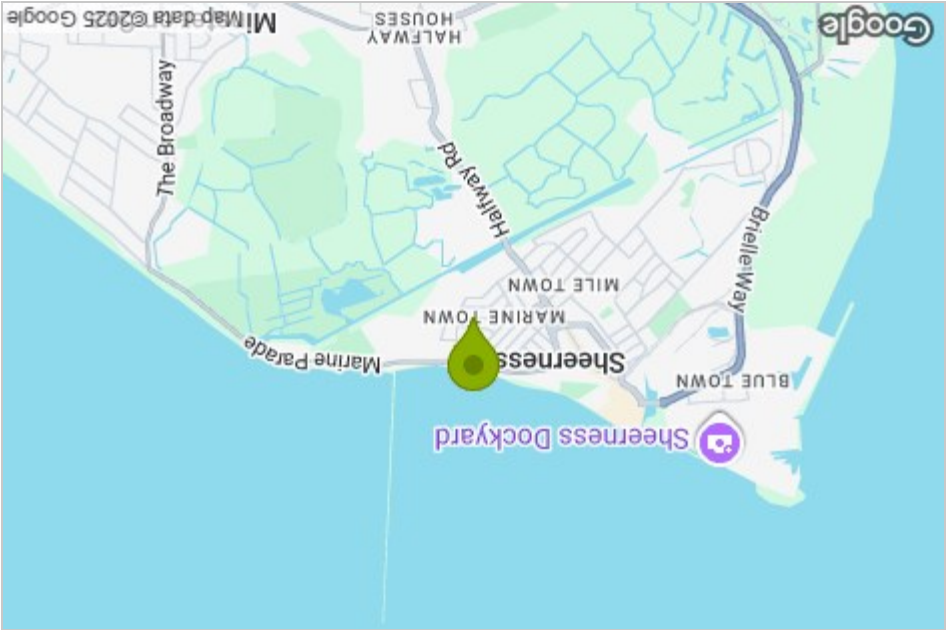
3 1 1 D



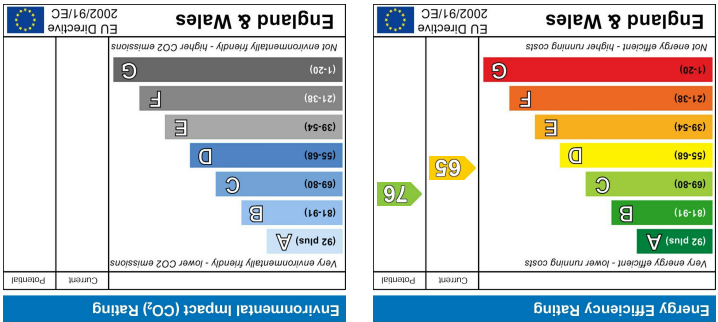
Floor Plan



Area Map



Energy Efficiency Graph



Viewing

Please contact our Isle of Sheppey Office on 01795 666 666 if you wish to arrange a viewing appointment for this property or require further information.

These particulars, whilst believed to be accurate are set out as a general outline only for guidance and do not constitute any part of an offer or contract. Intending purchasers should not rely on them as statements of representation or fact, but must satisfy themselves by inspection or otherwise as to their accuracy. No person in this firm's employment has the authority to make or give any representation or warranty in respect of the property.

James Perry
3 Broadway, Sheerness, Kent, ME12 1AB
Tel: 01795 666 666 Email: sales@james-perry.co.uk www.james-perry.co.uk

59 Unity Street



- 3 Bed Mid Terrace
- Council Tax Band A
- Ideal For First Time Buyers Or Investors
- Close To Schools And Amenities
- Gas Central Heating With Combi Boiler
- Short Walk To Town Centre And Train Station
- No Chain, Available Now
- Main Bathroom And Downstairs WC

Description

3 bed mid -terraced house nestled on Unity Street in the charming town of Sheerness, this delightful mid-terraced house offers a perfect blend of comfort and convenience. Spanning an impressive 936 square feet, the property boasts a spacious living room, ideal for both relaxation and entertaining guests.

The generous living area is bathed in natural light, creating a warm and inviting atmosphere. This home is perfect for families or individuals seeking a peaceful retreat while still being close to the vibrant heart of the town.

One of the standout features of this property is its prime location. Just a short stroll away, you will find the bustling high street, where a variety of shops, cafes, and amenities await. This accessibility ensures that you can enjoy the best of Sheerness without the need for a car.

Whether you are a first-time buyer or looking to invest in a rental property, this mid-terraced house on Unity Street presents an excellent opportunity. With its spacious layout and proximity to local conveniences, it is sure to appeal to a wide range of potential residents. Do not miss the chance to make this lovely house your new home.

, Sheerness, ME12 2PR

